

Displacement from 9 to 27 ccm
Pressure up to 250 bar
Speed from 500 to 3200 RPM

GEAR PUMPS
T3T

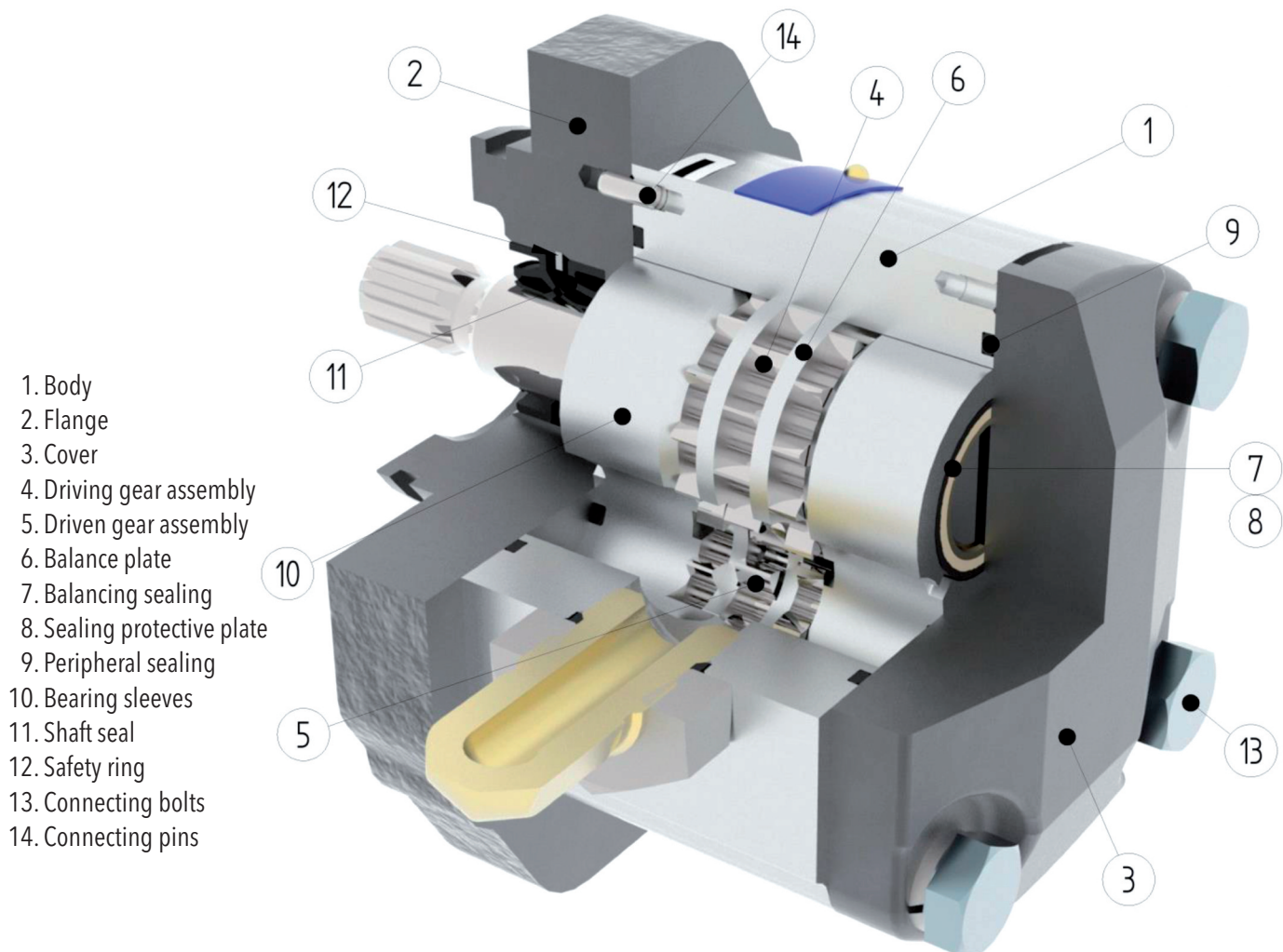
TABLE OF CONTENTS

DESCRIPTION.....	2
BASIC PARTS OF PUMP	2
PARAMETER TABLE	3
DIRECTION OF ROTATION	3
ACOUSTIC PRESSURE AND PRESSURE PULSATION.....	4
FORMULAS USED FOR CALCULATION.....	5
PUMP EFFICIENCIES	5
WORKING LIQUID.....	6
PRESSURE LOAD.....	6
T3T FLOW RATE AND POWER CURVES	7
ORDER KEY – SINGLE VERSION	10
ORDER KEY – MULTIPLE VERSION.....	11
COMBINATIONS OF FLANGES AND SHAFTS	12
FLANGES DESIGN.....	13
DRIVE SHAFTS.....	14
LIQUID INLET AND OUTLET CONNECTION	17
CATALOGUE SHETS OF T3T SERIES BASIC DESIGNS.....	18
NOTES	23

DESCRIPTION

- Pumps of T3T series with differential gearing (triple design) are applicable for its very low pulsation and lower noise in modern hydraulic systems, handling technologies and mobile hydraulics.
- Basic execution is composed from a few parts. The body of pump are produced from heavy duty aluminium alloy. Cover and Flange are from iron grey or aluminium alloy. All flanges as well as inlets and outlets (location on side - in body or axial - in cover) comply with all world - recognised standards. Gear wheels with special differential gearing are a special designed to achieve a low pulsation and also very good subjective noise without peaks at frequency spectrum, are made of ultrahigh-strength steel. Wheel journals with high quality surface are stored in bearings, which are constantly lubricated and cooled with flow working liquid.
- Available is also multiple-version pumps with inlets for each section or one common inlet.
- Upon requirement on very low pulsation is appropriate a special quarto design - designation T3Q.

BASIC PARTS OF PUMP



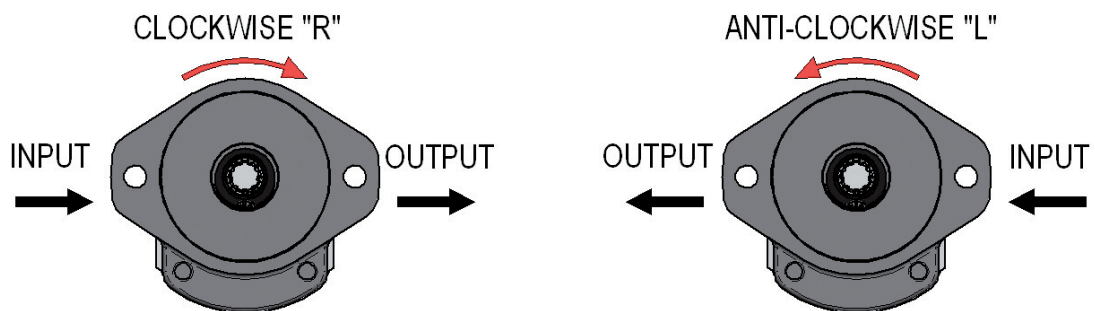
1. Body
2. Flange
3. Cover
4. Driving gear assembly
5. Driven gear assembly
6. Balance plate
7. Balancing sealing
8. Sealing protective plate
9. Peripheral sealing
10. Bearing sleeves
11. Shaft seal
12. Safety ring
13. Connecting bolts
14. Connecting pins

PARAMETER TABLE

Nominal Size Parameters		Sym.	Unit.	T3T 9	T3T 12	T3T 15	T3T 16	T3T 18	T3T 21	T3T 24	T3T 27
Actual displacement		V_g	[cm ³]	9.03	12.05	15.08	16.08	18.10	21.10	24.05	27.13
Rotation speed	nominal	n_n	[min ⁻¹]	1500	1500	1500	1500	1500	1500	1500	1500
	minimum	n_{min}	[min ⁻¹]	500	500	500	500	500	500	500	500
	maximum	n_{max}	[min ⁻¹]	2800	3200	3200	3200	2800	2200	2000	1900
Pressure at inlet	minimum	p_{1min}	[bar]	-0.30	-0.30	-0.30	-0.30	-0.30	-0.30	-0.30	-0.30
	maximum	p_{1max}	[bar]	1.00	1.00	1.00	1.00	1.00	1.00	1.00	1.00
Pressure at outlet	max. continuous	p_{2n}	[bar]	240	240	240	240	240	220	200	160
	maximum	p_{2max}	[bar]	250	250	250	250	250	225	210	170
	peak	p_3	[bar]	260	260	260	260	260	230	220	180
Nominal flow rate (min.) at n_n and p_{2n}		Q_n	[dm ³ .min ⁻¹]	12.33	16.63	20.81	22.19	24.98	29.12	32.83	37.03
Maximum flow rate at n_{max} a p_{2max}		Q_{max}	[dm ³ .min ⁻¹]	23.01	35.48	44.40	47.34	46.63	42.71	43.77	46.91
Nominal input power (max.) at n_n and p_{2n}		P_n	[kW]	7.08	9.45	11.83	12.61	14.20	15.17	15.72	14.19
Maximum input power at n_{max} a p_{2max}		P_{max}	[kW]	13.77	21.00	26.28	28.03	27.60	22.75	22.01	19.09
Weight		m	[kg]	3.05	3.25	3.40	3.45	3.55	3.70	3.85	4.00

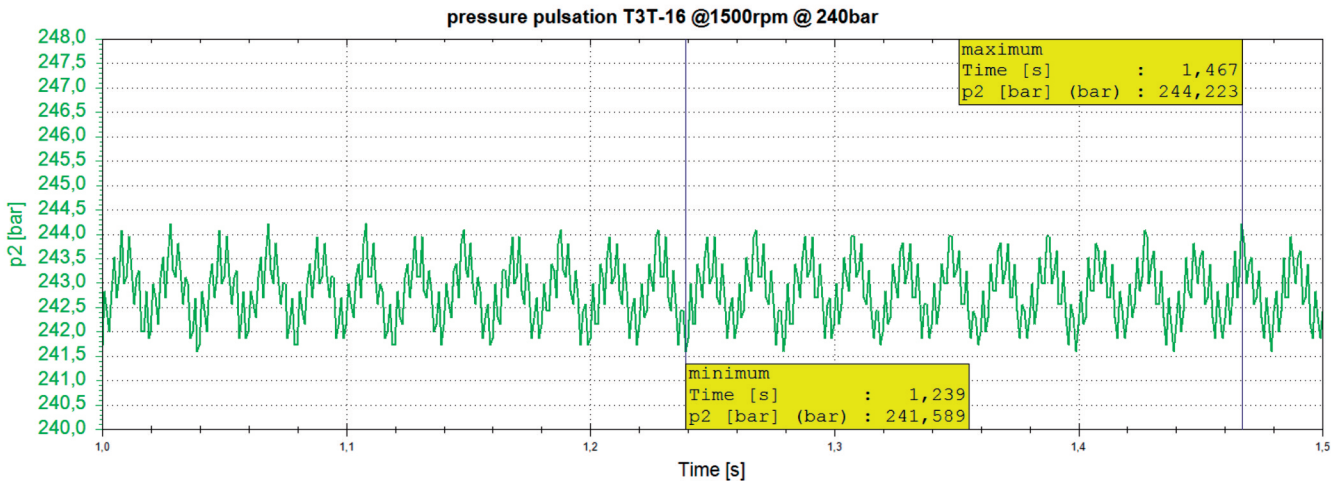
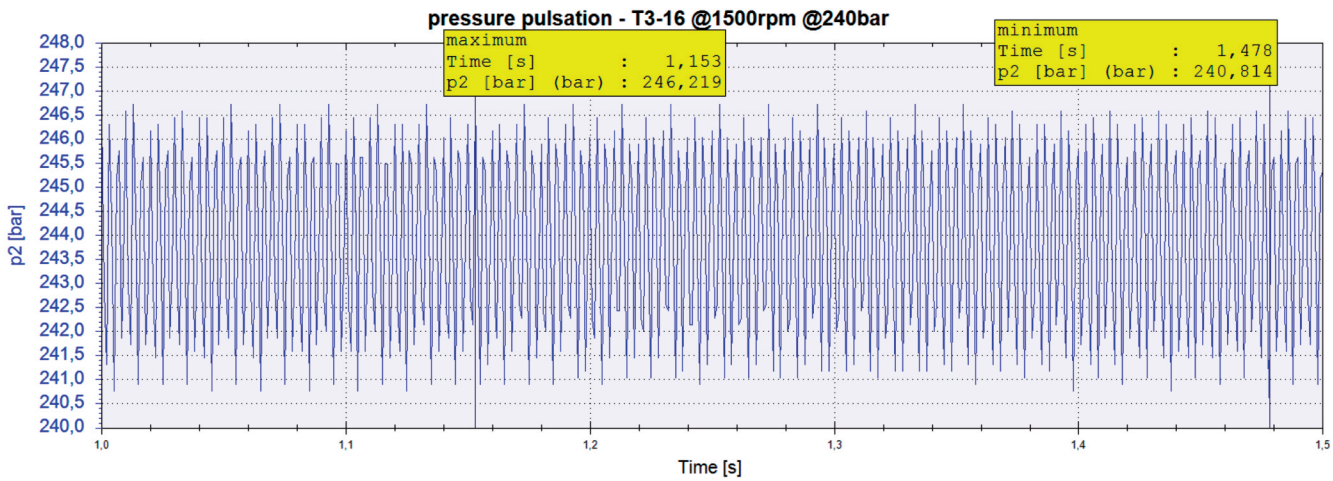
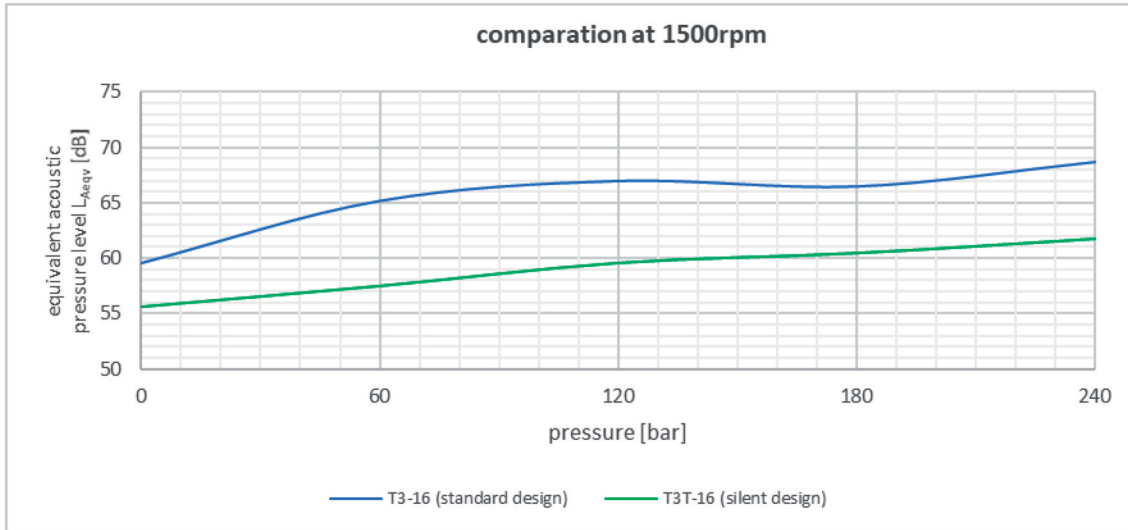
DIRECTION OF ROTATION

- Determine direction of rotation by looking at the drive shaft. The pump can only be used in the specified direction of rotation.



ACOUSTIC PRESSURE AND PRESSURE PULSATION

- Comparison of acoustic pressure and pressure pulsation between T3-16 (standard design) and T3T (silent design).



FORMULAS USED FOR CALCULATION

Flow rate
 Q

$$Q = \frac{V_g \cdot n}{1000} \cdot \eta_v \quad [\text{dm}^3 \cdot \text{min}^{-1}]$$

V_g [cm³] pump displacement
 n [min⁻¹] rotation speed
 η_v [-] volumetric efficiency

Displacement
 V_g

$$V_g = \frac{Q \cdot 1000}{n \cdot \eta_v} \quad [\text{cm}^3]$$

Torque
 M_k

$$M_k = \frac{V_g \cdot p}{20 \cdot \pi \cdot \eta_m} \quad [\text{Nm}]$$

p [bar] required pressure at outlet
 η_m [-] mechanical efficiency

Input power
 P

$$P = \frac{V_g \cdot n \cdot p}{600 \cdot 1000 \cdot \eta_t} \quad [\text{kW}]$$

η_t [-] total efficiency

PUMP EFFICIENCIES

Volumetric efficiency

η_v

It determines the amount of flow losses. Its value is $\eta_v = 0,92 \div 0,98$ (depending on rotation speed, viscosity of working liquid and outlet pressure). It can be expressed as follows:

$$\eta_v = \frac{Q_{act.}}{Q_{theor}} \quad [-]$$

$Q_{act.}$ [dm³ · min⁻¹] actual flow rate
 Q_{theor} [dm³ · min⁻¹] theoretical flow rate

Mechanical efficiency

η_m

It determines mechanical losses. Its value is about $\eta_m = 0,85$. It can be expressed as follows:

$$\eta_m = \frac{M_{theor}}{M_{act.}} \quad [-]$$

$M_{act.}$ [Nm] actual torque
 M_{theor} [Nm] theoretical torque

Total efficiency

η_t

It is defined as product of η_n and η_m and determines difference between theoretical and actual required input power:

$$\eta_t = \eta_v \cdot \eta_m = \frac{P_{theor}}{P_{act.}} \quad [-]$$

$P_{act.}$ [kW] actual input power
 P_{theor} [kW] theoretical input power

WORKING LIQUID

- Mineral oils for hydraulic drives
- Hydraulic liquids based on plant oils suitable for hydraulic drives

Liquid temperature

- $t = -20 \div +80$ [°C]
when used with FKM (Viton) seal up to 120 [°C]

Cinematic viscosity

- Recommended (during continuous operation): $\nu = 20 \div 80 \cdot 10^{-6} [\text{m}^2 \cdot \text{s}^{-1}]$
- Maximum (cold starting, at viscosity >1000 , operating pressure <10 bar is permissible, speed $<1500 \cdot \text{min}^{-1}$): $\nu = 1200 \cdot 10^{-6} [\text{m}^2 \cdot \text{s}^{-1}]$
- Minimum (operating mode at $10 \cdot 10^{-6}$ up $20 \cdot 10^{-6}$ should be consulted with manufacturer): $\nu = 10 \cdot 10^{-6} [\text{m}^2 \cdot \text{s}^{-1}]$

Filtration coefficient β_{α}

$\beta_{25} 75 \geq$ (for pressure $p_2 < 200$ bar)
 $\beta_{10} 75 \geq$ (for pressure $p_2 > 200$ bar)

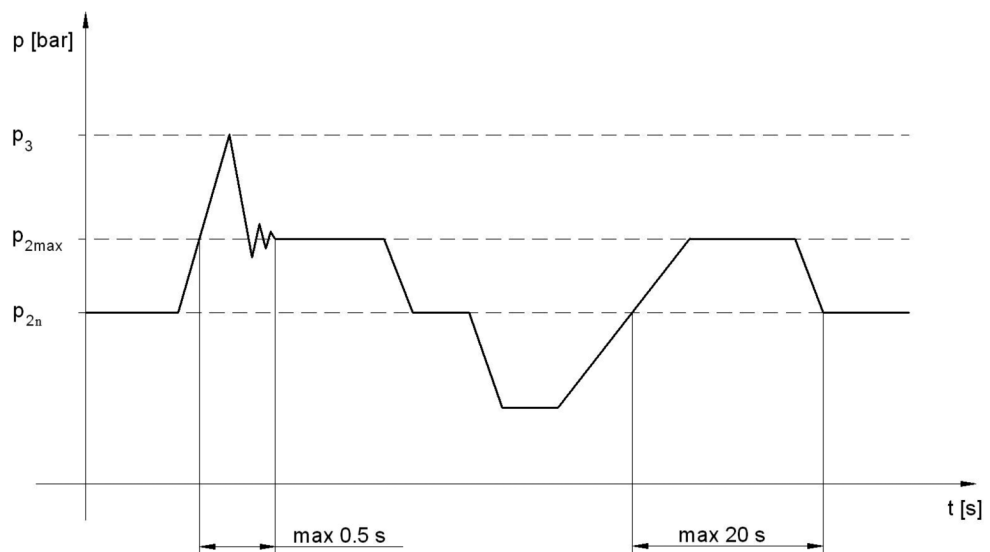
Liquid contamination class according to ISO 4406

21/18/15 (for pressure $p_2 < 200$ bar)
 20/17/14 (for pressure $p_2 > 200$ bar)

Liquid contamination class according to NAS 1638

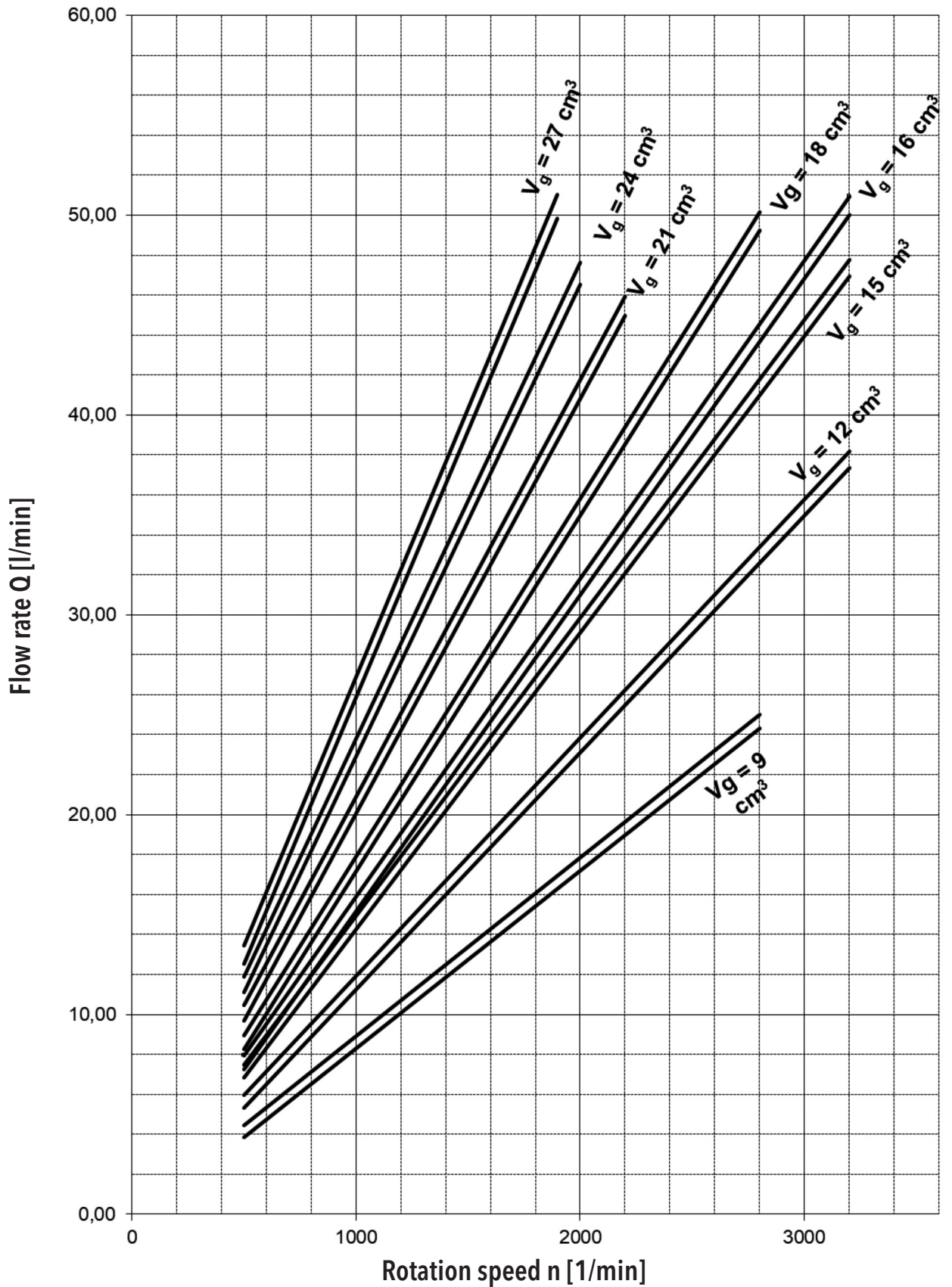
10 (for pressure $p_2 < 200$ bar)
 8 (for pressure $p_2 > 200$ bar)

PRESSURE LOAD

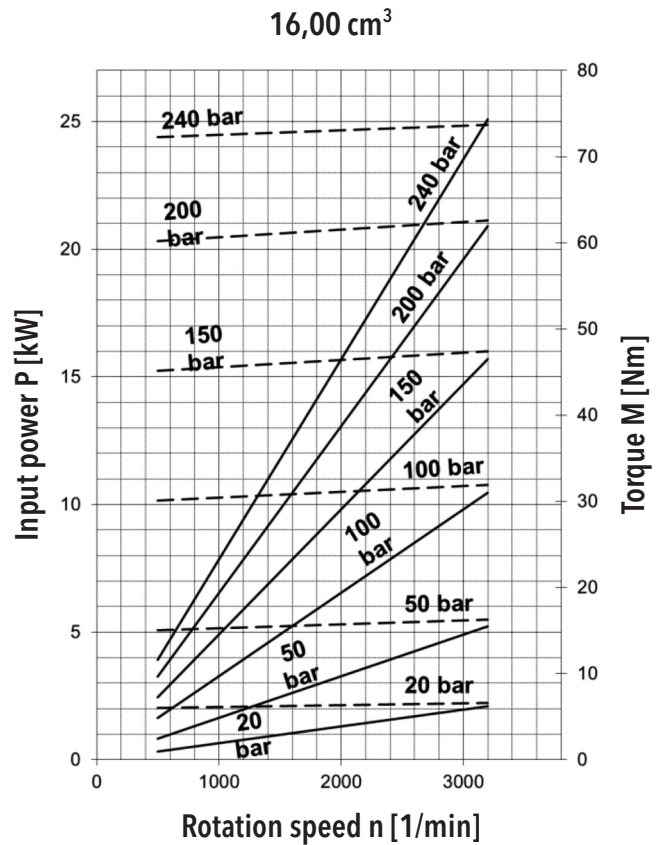
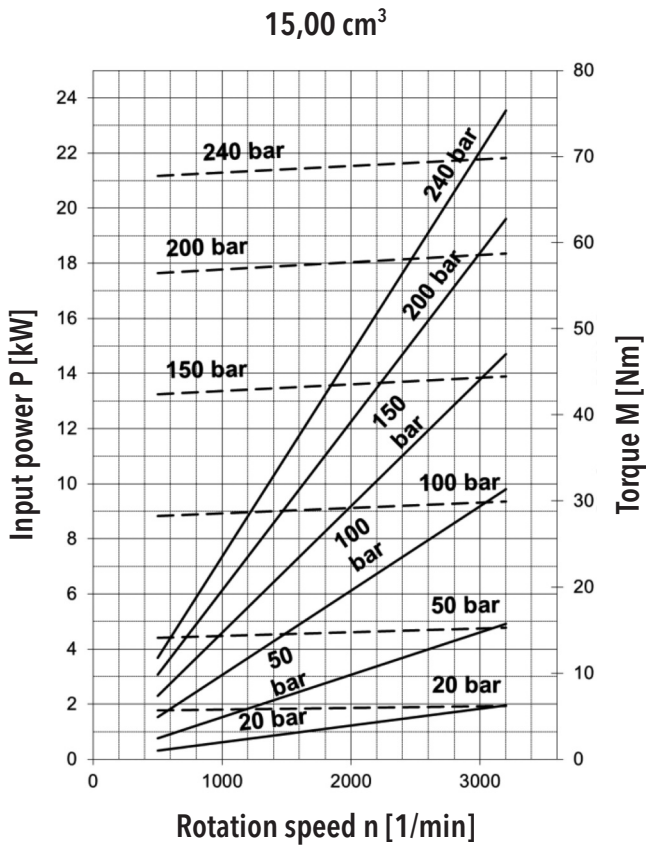
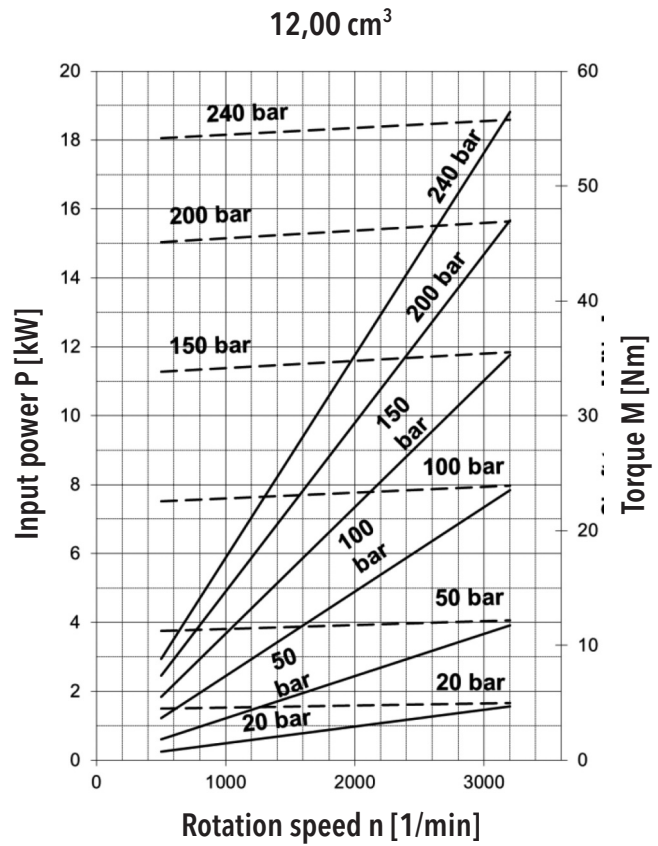
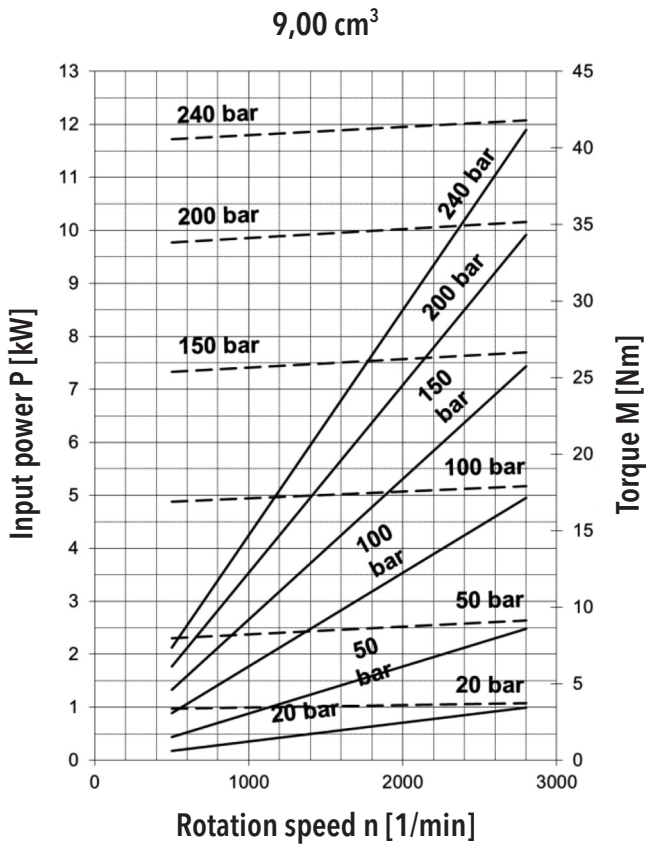


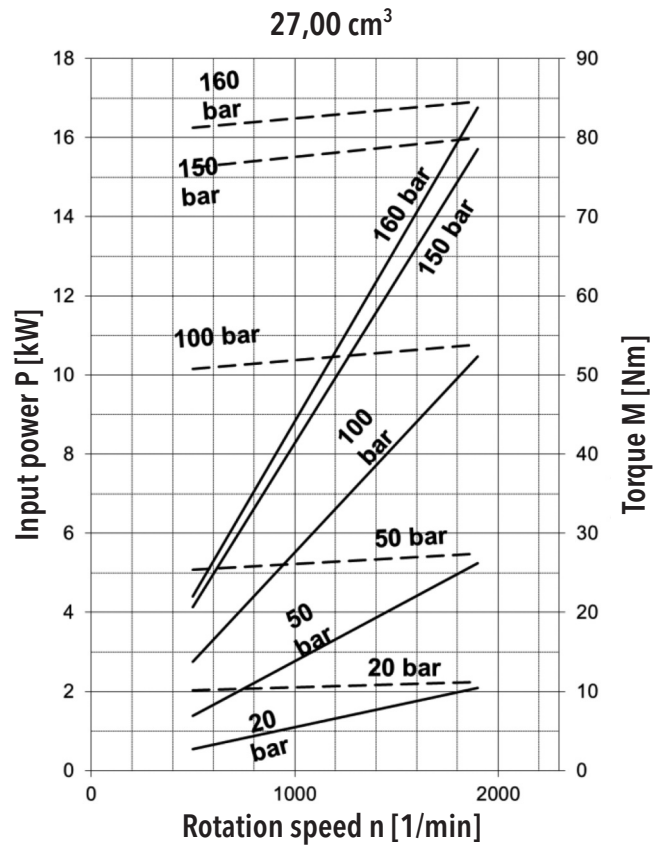
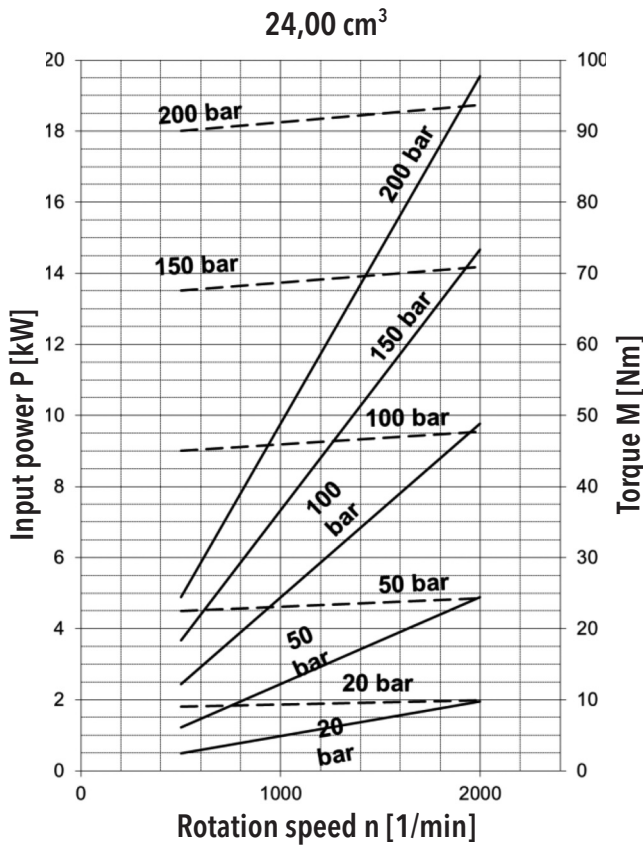
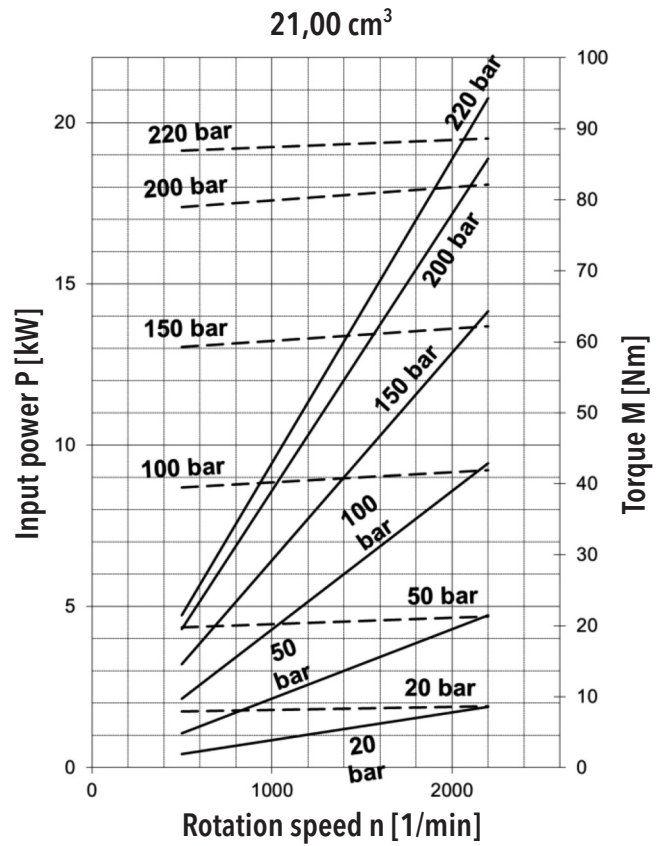
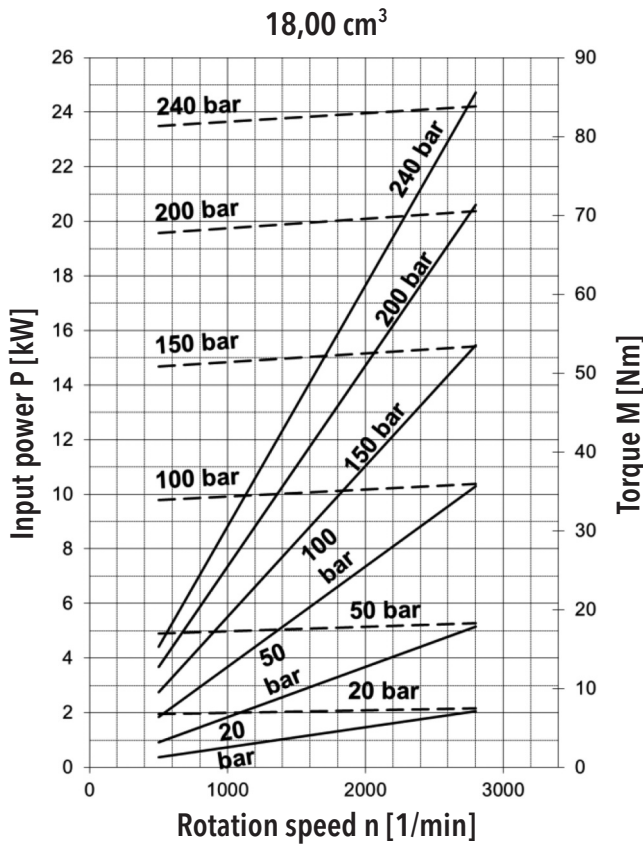
- p_{2n} **max. contin. pressure** Max. working pressure, at which the pump can be operated without time limitation.
- p_{2max} **max. pressure** Maximum pressure permissible for a short time, max. 20s.
- p_3 **peak pressure** Short-time pressure (fractions of a second) arising in case of a sudden change of the operating mode; any excess of this pressure during operation is impermissible.

T3T FLOW RATE AND POWER CURVES



Above curves apply to ISO Vg 46 oil at temperature $t = 45^\circ\text{C}$.





ORDER KEY - SINGLE VERSION

T3T - 16 R - S02 D04 - S G04 G03 - V . 001

Code	Type
T3T	T3T Series Gear Pump

Code	Displacement [cm ³]
9	9,03
12	12,05
15	15,08
16	16,08
18	18,10
21	21,10
24	24,05
27	27,13
XX	Other displacements on request

Code	Direction of rotation
R	Clockwise
L	Anti-clockwise

Code	Flange design
F02	Rectangular flange, centre ring $\varnothing 80$
R05	Rectangular flange, centre ring $\varnothing 36,5$
R06	Rectangular flange, centre ring $\varnothing 80$
R07	Rectangular flange, centre ring $\varnothing 60$
S02	SAE A
S03	SAE B
A07	Flange with trough-bolts, centre ring $\varnothing 50$
A08	Flange with trough-bolts, centre ring $\varnothing 50$
A09	Flange with trough-bolts, centre ring $\varnothing 52$, with O-ring
A10	Flange with trough-bolts, centre ring $\varnothing 52$, with O-ring
Z	Special desing

Code	Location of inlets and outlets
S	Side (in the body)
R	Axial (in the cover)
C	Combination
S	Special desing

Code	Drive shaft desing
C07	Taper 1:8 Key width 3
C08	Taper 1:8 Key width 3,2
C09	Taper 1:8 Key width 4
C10	Taper 1:5 Key width 3
D04	Spline SAE 9T 16/32 DP
D06	Spline SAE 11T l=32, 16/32 DP
D07	Spline SAE 11T l=38, 16/32 DP
D08	Spline ČSN 17x1,25
D09	Spline DIN 5482 B17x14
D10	Spline GOST 6033-80
D11	Spline 16x13x3,5
K07	Cross coupling
V09	Cylindric $\varnothing 5/8$ " Key 4x4
V11	Cylindric $\varnothing 15$ Key 4x4
V12	Cylindric $\varnothing 3/4$ " Key 4,8x4,8
V13	Cylindric $\varnothing 20$ Key 6x6
Z	Special desing

Code	Special arrangements
bez ozn.	No special arrangements
001	With front-end bearing type 1
002	With front-end bearing type 2
004	Without shaft seal
005	Inlet in body, outlet in cover
006	Inlet in cover, outlet in body
007	Inlet in body, outlet in flange
008	Inlet in flange, outlet in body
010	With from-end bearing type 3
013	Variseal
014	Shaft seal - double lip

Code	Seal material
N	NBR
V	FKM
H	HNBR

Code	Liquid inlet and outlet connection shape
M02	Thread M 12x1,5
M05	Thread M 18x1,5
M09	Thread M 27x2
G01	Thread BSP G1/4
G02	Thread BSP G3/8
G03	Thread BSP G1/2
G04	Thread BSP G3/4
G05	Thread BSP G1"
U01	Thread 7/16-20 UNF-2B
U02	Thread 9/16-18 UNF-2B
U04	Thread 7/8-14 UNF-2B
U05	Thread 1-1/16-12 UN-2B
H05	Flanged fitting $\varnothing 15$; Square 4xM6 $\varnothing 35$
H06	Flanged fitting $\varnothing 20$; Square 4xM6 $\varnothing 40$
H07	Flanged fitting $\varnothing 13,5$; Square 4xM6 $\varnothing 30$
H08	Flanged fitting $\varnothing 20$; Square 4xM8 $\varnothing 40$
H10	Flanged fitting $\varnothing 25$; Square 4xM8 $\varnothing 55$
Z	Special desing

An example of designation for the T3T anti-clockwise pump with displacement of 12 cm³, SAE A flange, SAE 9T spline, BSP inlets in cover and standard NBR seal without special arrangements: **T3T-12L-S02D04-RG03G03-N**

ORDER KEY - MULTIPLE VERSION

T3T - 16 / 8 / 8 R - S02 D04 - S G04 G03 / G03 G03 / G03 G03 - V . 001

Code	Type
T3T	T3T Series Gear Pump

Code	Displacement [cm ³]
9	9,03
12	12,05
15	15,08
16	16,08
18	18,10
21	21,10
24	24,05
27	27,13
XX	Other displacements on request

Code	Direction of rotation
R	Clockwise
L	Anti-clockwise

Code	Flange design
F02	Rectangular flange, centre ring Ø80
R05	Rectangular flange, centre ring Ø36,5
R06	Rectangular flange, centre ring Ø80
R07	Rectangular flange, centre ring Ø60
S02	SAE A
S03	SAE B
A07	Flange with trough-bolts, centre ring Ø50
A08	Flange with trough-bolts, centre ring Ø50
A09	Flange with trough-bolts, centre ring Ø52, with O-ring
A10	Flange with trough-bolts, centre ring Ø52, with O-ring
Z	Special desing

Code	Location of inlets and outlets
S	Side (in the body)
C	Combination

Code	Drive shaft desing
C07	Cone 1:8 Key 3 x 5
C08	Cone 1:8 Key 3,2 x 6,5
C09	Cone 1:8 Key 4 x 6,5
C10	Cone 1:5 Key 3 x 5
D04	Spline SAE 9T
D06	Spline SAE 11T, I=32
D07	Spline SAE 11T, I=38
D08	Spline ČSN 17x1,25
D09	Spline DIN 5482 B17x14
D10	Spline GOST 6033-80
D11	Spline 16 x 13 x 3,5
K07	Cross coupling
V09	Cylindric Ø5/8" Key 4x4
V11	Cylindric Ø15 Key 4x4
V12	Cylindric Ø3/4" Key 4,8x4,8
V13	Cylindric Ø20 Key 6x6
Z	Special desing

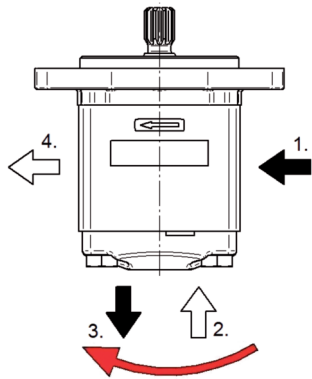
Code	Special arrangements
-	No special arrangements
001	With front-end bearing type 1
002	With front-end bearing type 2
003	odtěsněné sekce u vícesekč. čerpadla
004	Without shaft seal
005	Inlet in body, outlet in cover
006	Inlet in cover, outlet in body
007	Inlet in body, outlet in flange
008	Inlet in flange, outlet in body
010	With from-end bearing type 3
012	Inside drain
013	Variseal
014	Shaft seal - double lip

Code	Seal material
N	NBR
V	FKM
H	HNBR

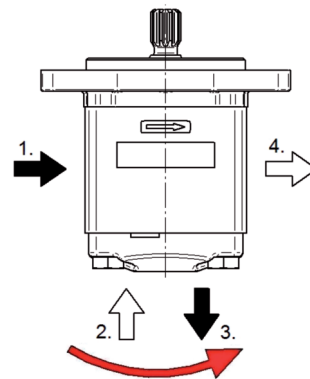
Code	Liquid inlet and outlet connection shape
M02	Thread M 12x1,5
M05	Thread M 18x1,5
M09	Thread M 27x2
G01	Thread BSP G1/4
G02	Thread BSP G3/8
G03	Thread BSP G1/2
G04	Thread BSP G3/4
G05	Thread BSP G1"
U01	Thread 7/16-20 UNF-2B
U02	Thread 9/16-18 UNF-2B
U04	Thread 7/8-14 UNF-2B
U05	Thread 1-1/16-12 UN-2B
H05	Flanged fitting Ø15; Square 4xM6 Ø35
H06	Flanged fitting Ø20; Square 4xM6 Ø40
H07	Flanged fitting Ø13,5; Square 4xM6 Ø30
H08	Flanged fitting Ø20; Square 4xM8 Ø40
H10	Flanged fitting Ø25; Square 4xM8 Ø55
Z	Special desing

An example of designation for the T3T three-section clockwise pump with displacements 12, 12, 9 cm³, Rectangular flange, centre ring Ø 36.5, cone 1:8, metric one common inlet and three outlets and FKM sealing without special arrangements: **T3T-12/12/9R-R05C07-SNM05/M09M05/NM05-V**

Note: In case of combination inlets, with the code „C” is respected following sequence of inlets and outlets:



For clockwise and reverse gear pump,
in direction clockwise



For anti-clockwise gear pump,
in direction anti-clockwise

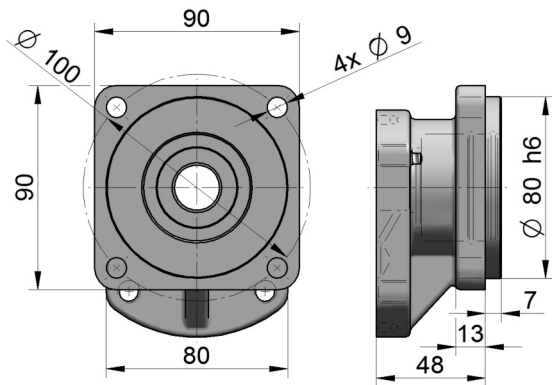
For. ex....: T3-12R-S02D04-CG04 G04 G03 G03 -N
1. 2. 3. 4.

COMBINATIONS OF FLANGES AND SHAFTS

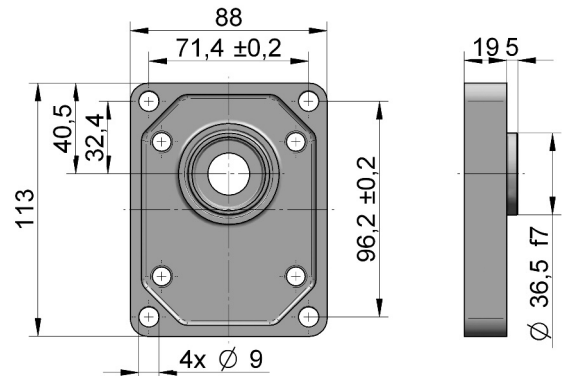
		FLANGE DESIGN														
		F02	R05	R06	R07	S02	S03	A07	A08	A09	A10					
DRIVE SHAFT	C07		●													
	C08		●													
	C09		●													
	C10				●				●	●						
	D04						●	●								
	D06						●	●								
	D07						●	●								
	D08			●												
	D09				●				●	●						
	D10		●													
	D11					●										
	K05										●		●			
	V09						●	●								
	V11			●												
	V12						●	●								
	V13		●													

FLANGES DESIGN

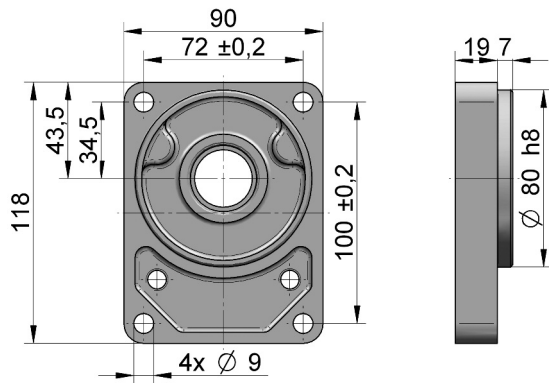
F02:



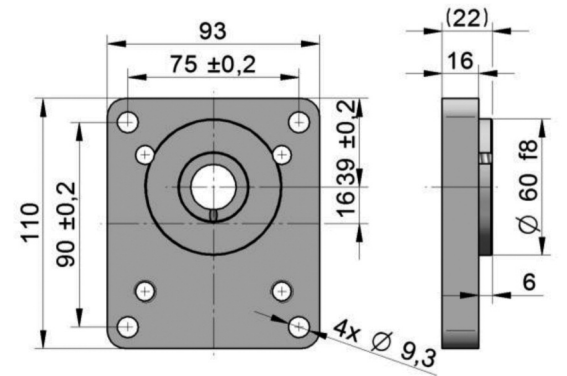
R05:



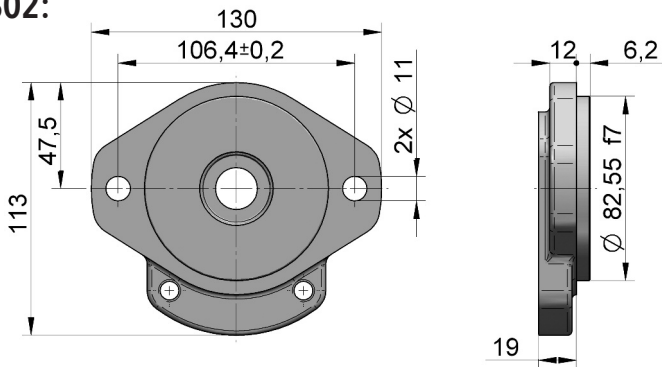
R06:



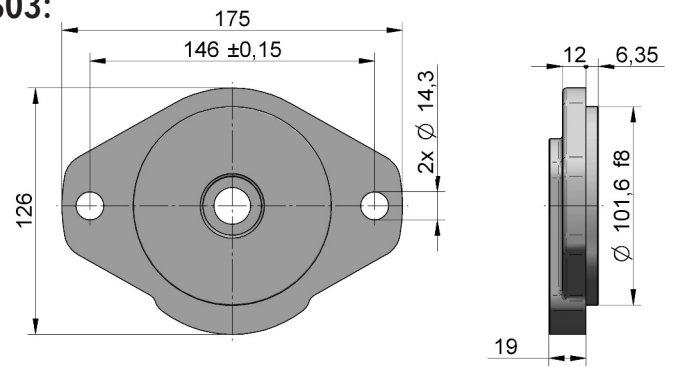
R07:



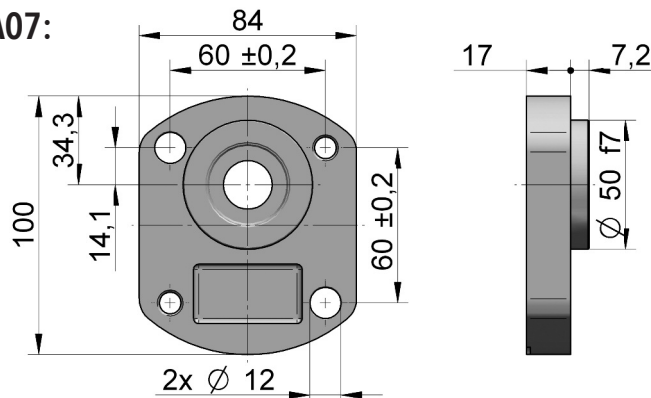
S02:



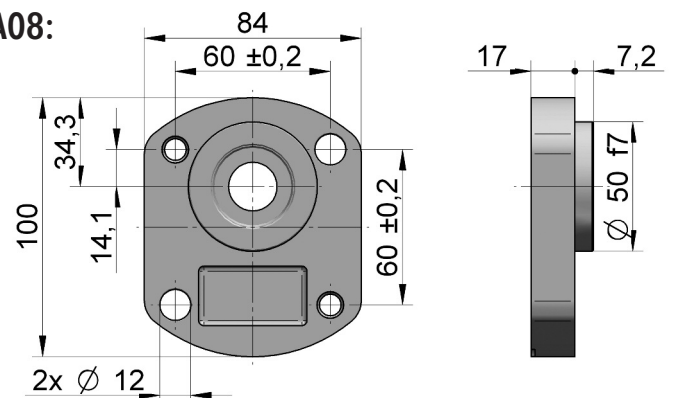
S03:



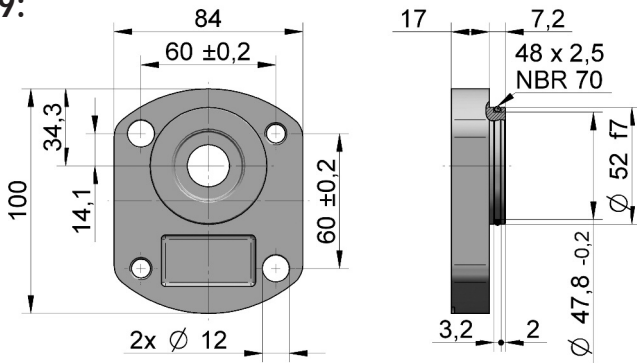
A07:



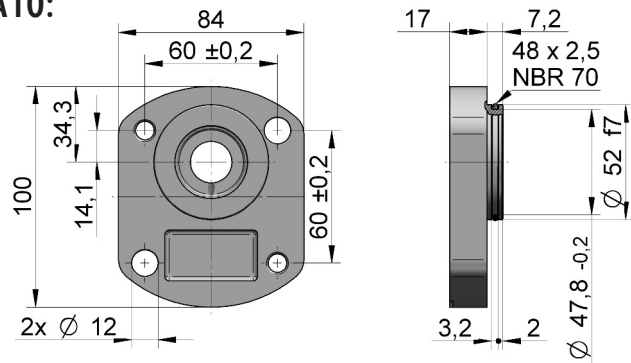
A08:



A09:



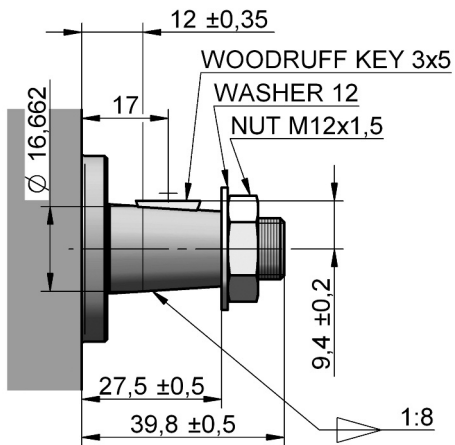
A10:



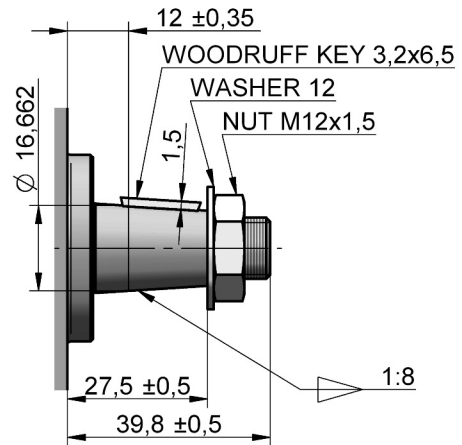
DRIVE SHAFT

Note: maximum allowed torque on a drive shaft is 100 Nm.

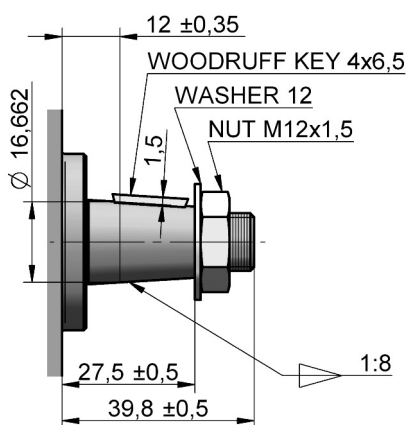
C07:



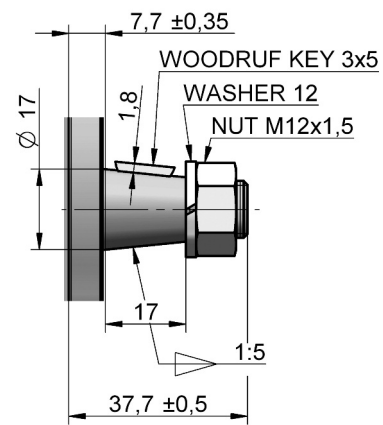
C08:



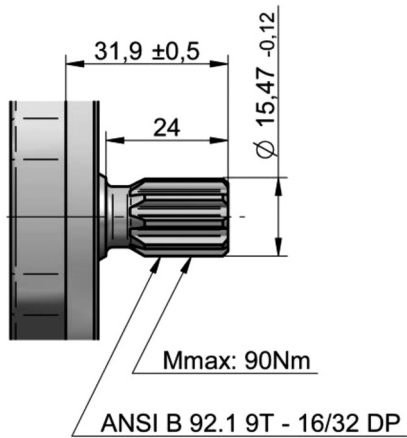
C09:



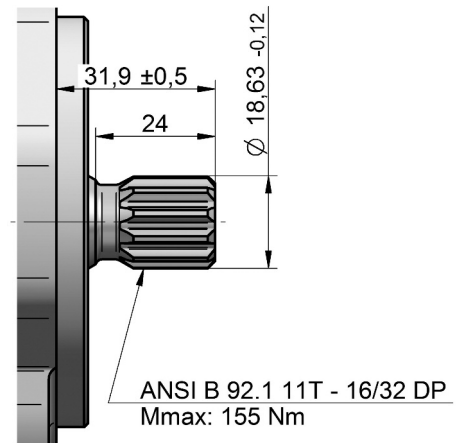
C10:



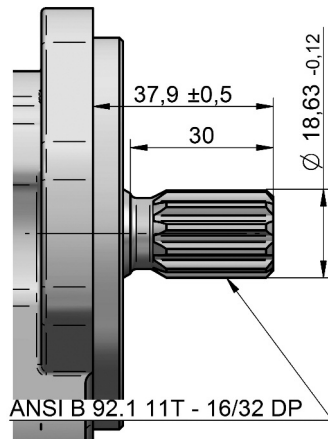
D04:



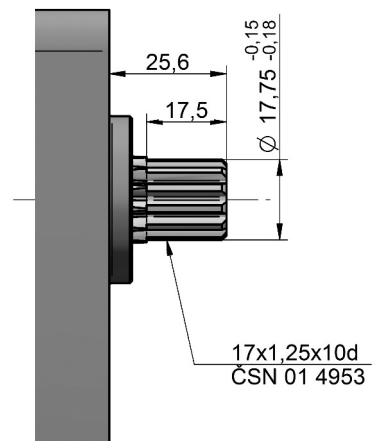
D06:



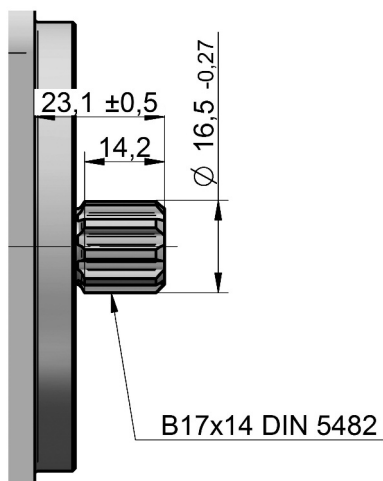
D07:



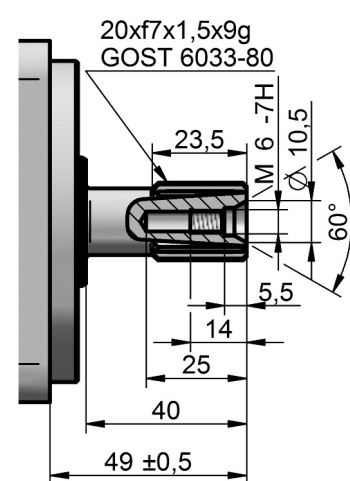
D08:

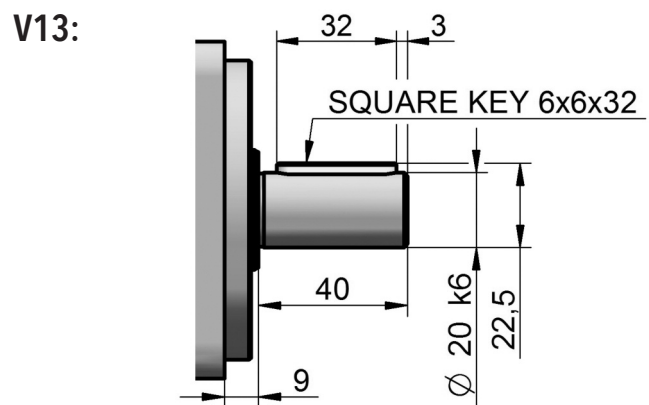
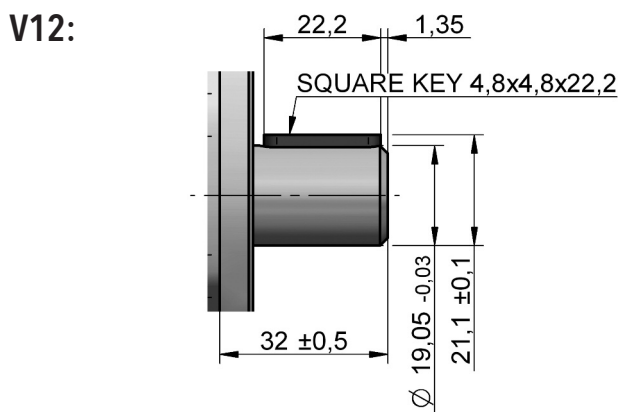
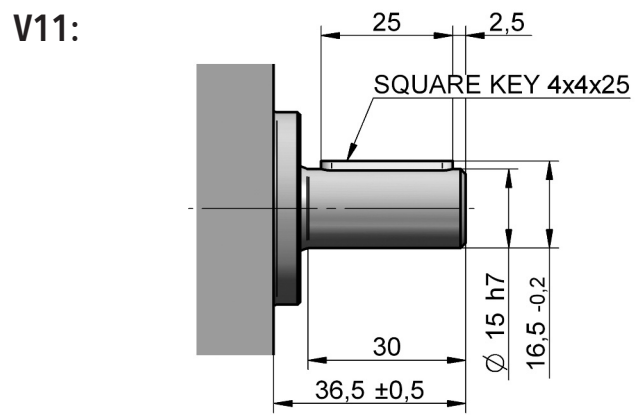
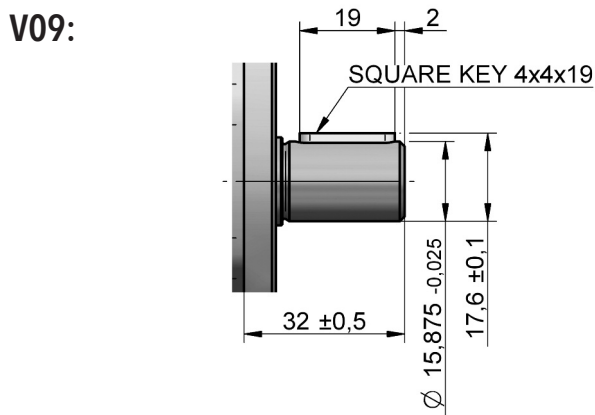
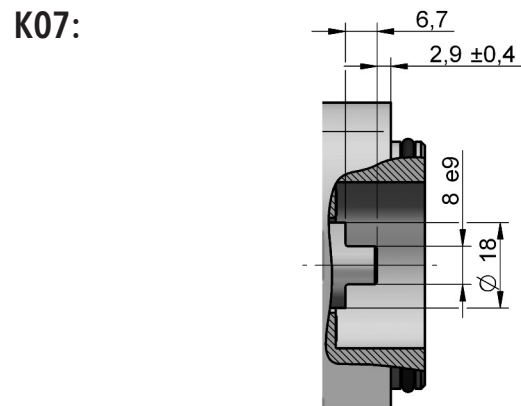
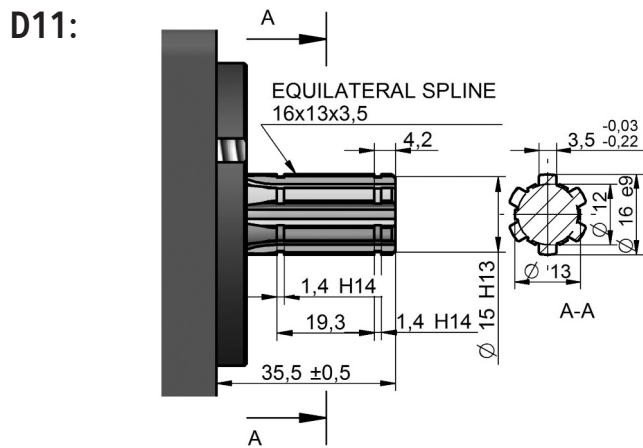


D09:



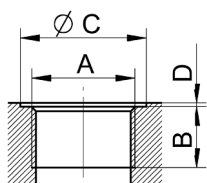
D10:





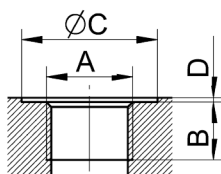
LIQUID INLET AND OUTLET CONNECTION

Metric thread according to ISO 6149



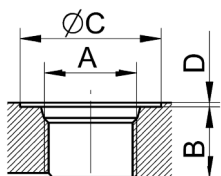
Displacement [cm ³]	kód	Inlet				kód	Outlet			
		A	B	C	D		A	B	C	D
all	M09	M 27x2	16	33	1	M05	M 18x1,5	14	24	1

BSPP pipe thread according to ISO 228 - 1



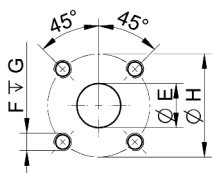
Displacement [cm ³]	Code	Inlet				Code	Outlet			
		A	B	C	D		A	B	C	D
to 10	G03	G 1/2"	14	33	1	G03	G 1/2"	14	33	1
10 - 25	G04	G 3/4"	16	39	1	G03	G 1/2"	14	33	1
above 25	G05	G 1"	18	45	1	G04	G 3/4"	16	39	1

UNF thread according to SAE



Displacement [cm ³]	Code	Inlet				Code	Outlet			
		A	B	C	D		A	B	C	D
to 10	U04	7/8-14 UNF-2B	17	34	1	U04	7/8-14 UNF-2B	17	34	1
11 - 31	U05	1-1/16-12 UNF-2B	19	41	1	U04	7/8-14 UNF-2B	17	34	1

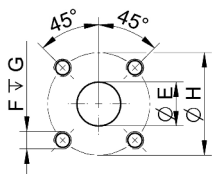
Flanged fittings according to DIN 8901/8902



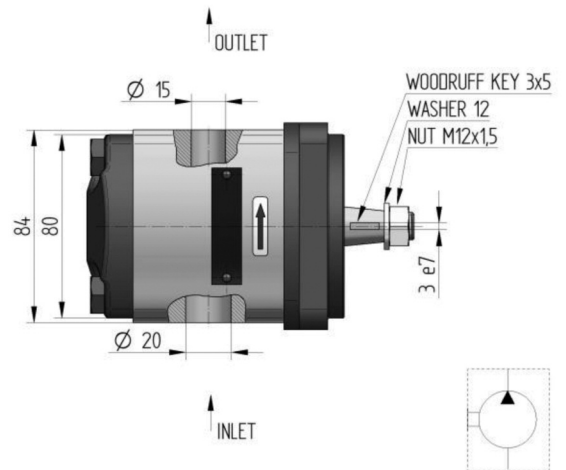
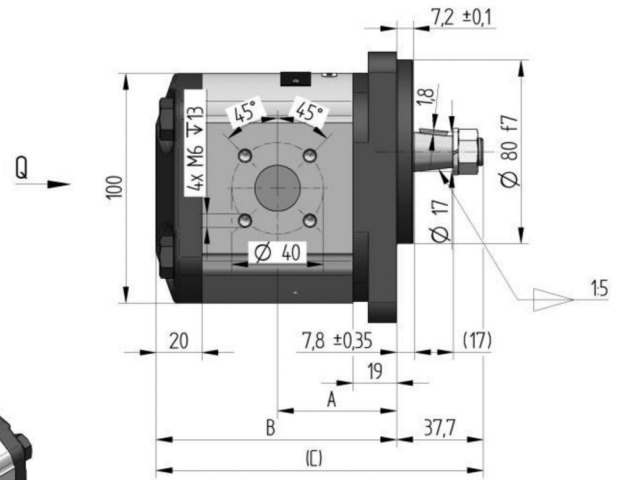
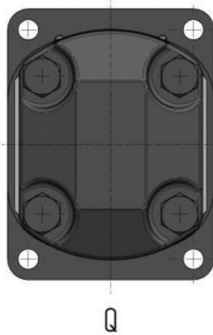
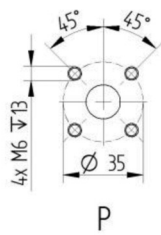
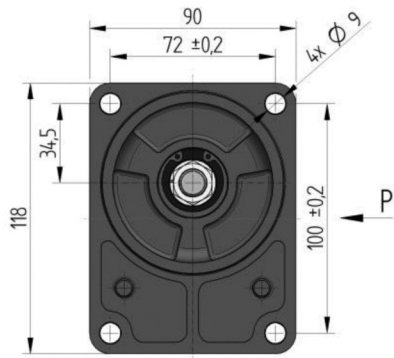
Displacement [cm ³]	Code	Inlet				Code	Outlet			
		E	F	G	H		E	F	G	H
all	H06	20	M6	13	40	H05	15	M6	13	35
all	H10	25	M8	13	55	H05	15	M6	13	35

Note: H10H05 – for multiple version with one common inlet.

Flanged fittings - „square“

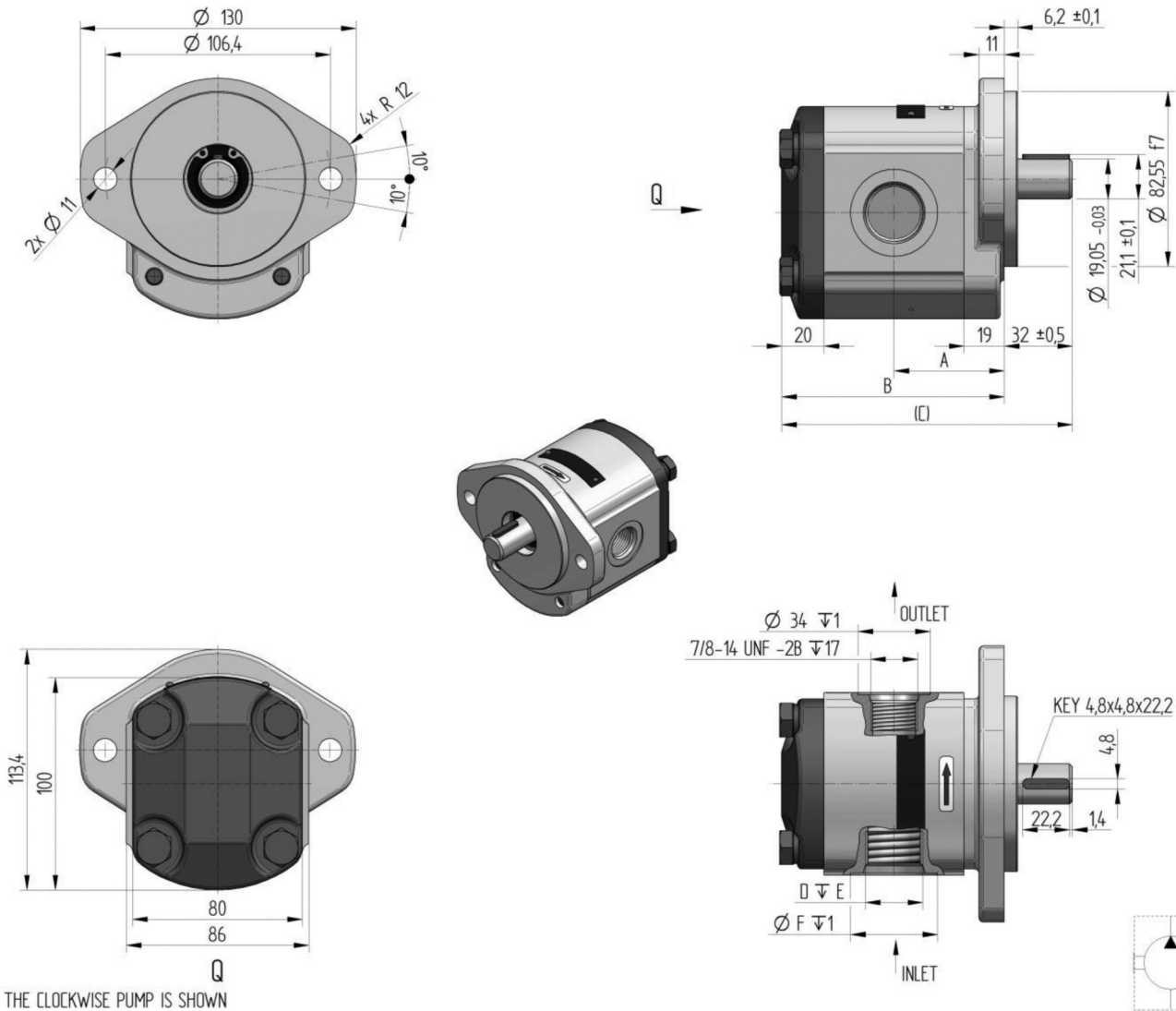


Displacement [cm ³]	Code	Inlet				Code	Outlet			
		E	F	G	H		E	F	G	H
all	H08	20	M8	13	40	H07	13.5	M6	13	30

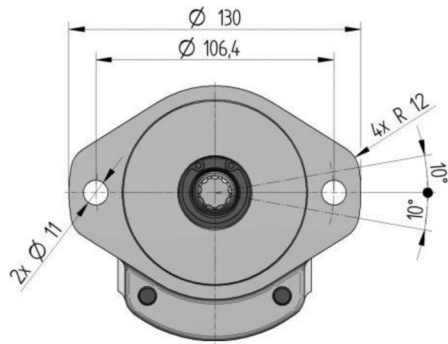


THE CLOCKWISE PUMP IS SHOWN

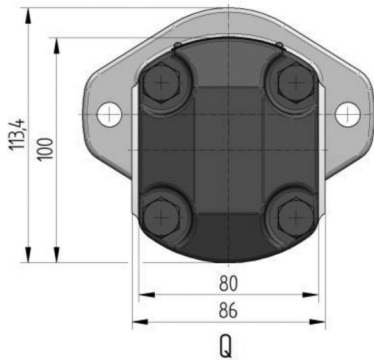
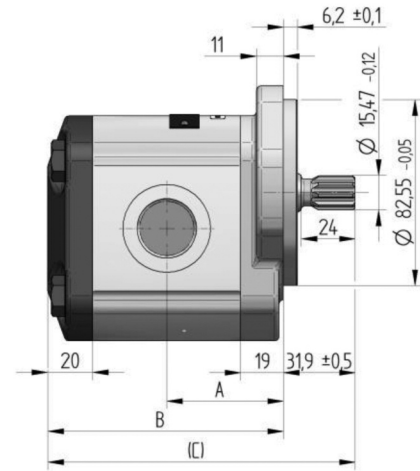
Order key	purch. code	direct. of rot.	displacement [cm ³ /1]	nom. press. [bar]	speed MIN. [min ⁻¹]	speed ORDER [min ⁻¹]	dimension		
							A [mm]	B [mm]	C [mm]
T3T-27R-R06C10-SH06H05-N		R	27	160	500	1 900	63.7	128.4	166.1
T3T-27L-R06C10-SH06H05-N		L							
T3T-24R-R06C10-SH06H05-N		R	24	200	500	2 000	61.3	123.6	161.3
T3T-24L-R06C10-SH06H05-N		L							
T3T-21R-R06C10-SH06H05-N		R	21	220	500	2 200	59.0	119.0	156.7
T3T-21L-R06C10-SH06H05-N		L							
T3T-18R-R06C10-SH06H05-N		R	18	240	500	2 800	56.7	114.3	152.0
T3T-18L-R06C10-SH06H05-N		L							
T3T-16R-R06C10-SH06H05-N		R	16	240	500	3 200	55.1	111.2	148.9
T3T-16L-R06C10-SH06H05-N		L							
T3T-15R-R06C10-SH06H05-N		R	15	240	500	3 200	54.3	109.6	147.3
T3T-15L-R06C10-SH06H05-N		L							
T3T-12R-R06C10-SH06H05-N		R	12	240	500	3 200	51.9	104.9	142.6
T3T-12L-R06C10-SH06H05-N		L							
T3T-9R-R06C10-SH06H05-N		R	9	240	500	2 800	49.6	100.1	137.8
T3T-9L-R06C10-SH06H05-N		L							



Order key	purch. code	direct. of rot.	displacement [cm ³ /1]	nom. press. [bar]	speed MIN. [min ⁻¹]	speed MAX. [min ⁻¹]	dimension					
							A [mm]	B [mm]	C [mm]	D [mm]	E [mm]	F [mm]
T3T-27R-S02V12-SU05U04-N		R	27	160	500	1 900	63.7	128.4	160.4	1-1/16-12 UN-2B	19	41
T3T-27L-S02V12-SU05U04-N		L										
T3T-24R-S02V12-SU05U04-N		R	24	200	500	2 000	61.3	123.6	155.6	1-1/16-12 UN-2B	19	41
T3T-24L-S02V12-SU05U04-N		L										
T3T-21R-S02V12-SU05U04-N		R	21	220	500	2 200	59.0	119.0	151.0	1-1/16-12 UN-2B	19	41
T3T-21L-S02V12-SU05U04-N		L										
T3T-18R-S02V12-SU05U04-N		R	18	240	500	2 800	56.7	114.3	146.3	1-1/16-12 UN-2B	19	41
T3T-18L-S02V12-SU05U04-N		L										
T3T-16R-S02V12-SU05U04-N		R	16	240	500	3 200	55.1	111.2	143.2	1-1/16-12 UN-2B	19	41
T3T-16L-S02V12-SU05U04-N		L										
T3T-15R-S02V12-SU05U04-N		R	15	240	500	3 200	54.3	109.6	141.6	1-1/16-12 UN-2B	19	41
T3T-15L-S02V12-SU05U04-N		L										
T3T-12R-S02V12-SU05U04-N		R	12	240	500	3 200	51.9	104.9	136.9	1-1/16-12 UN-2B	19	41
T3T-12L-S02V12-SU05U04-N		L										
T3T-9R-S02V12-SU04U04-N		R	9	240	500	2 800	49.6	100.1	132.1	7/8-14 UNF-2B	17	34
T3T-9L-S02V12-SU04U04-N		L										

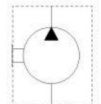
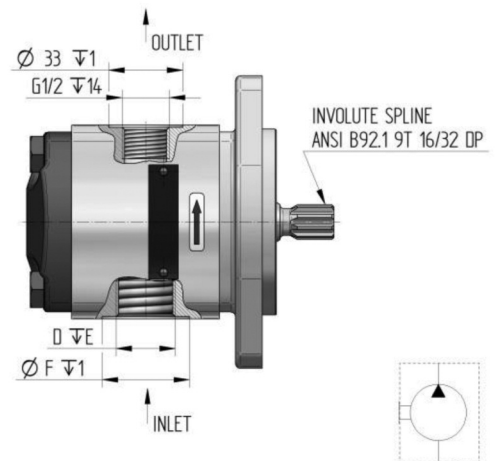


Q

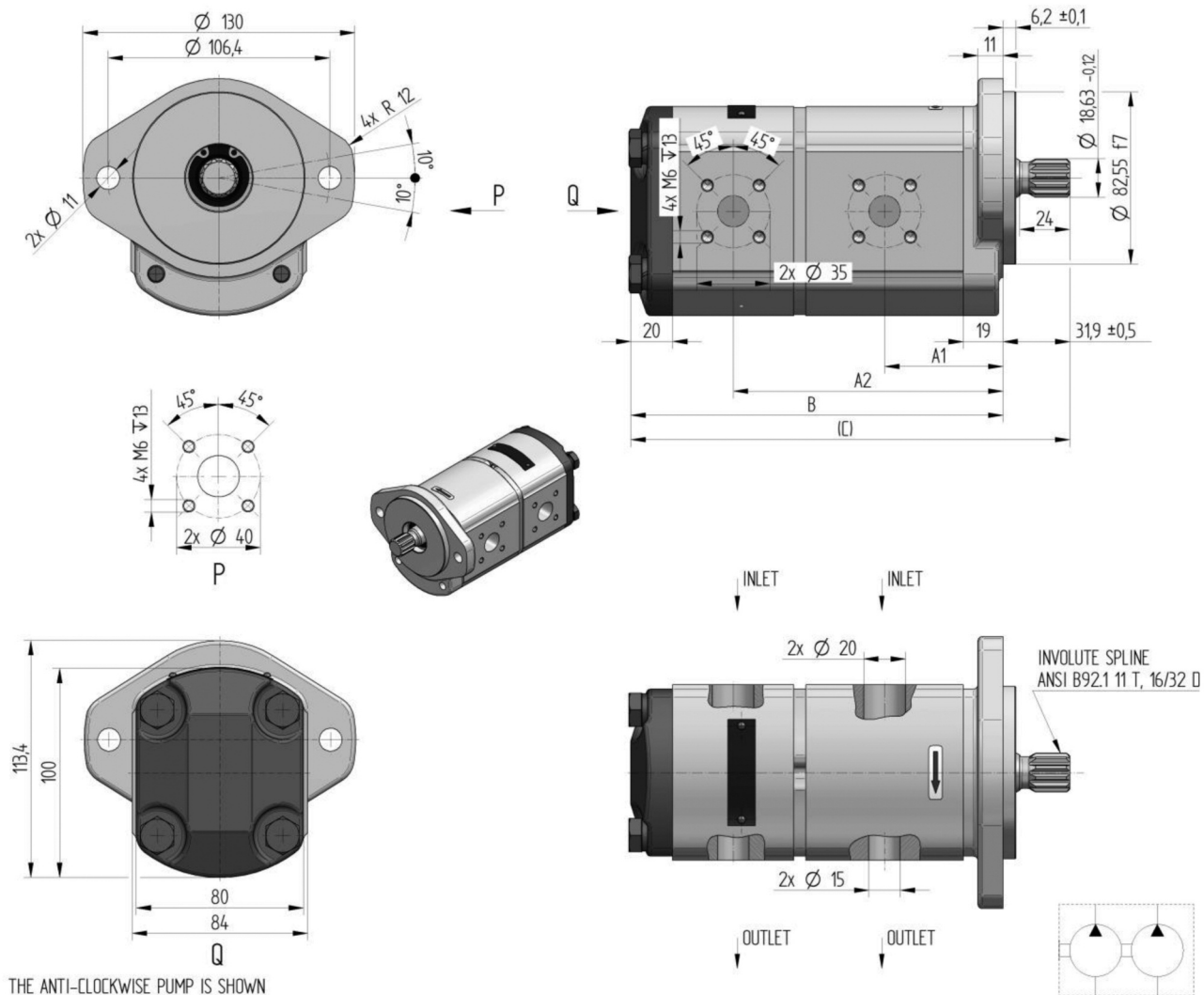


Q

THE CLOCKWISE PUMP IS SHOWN

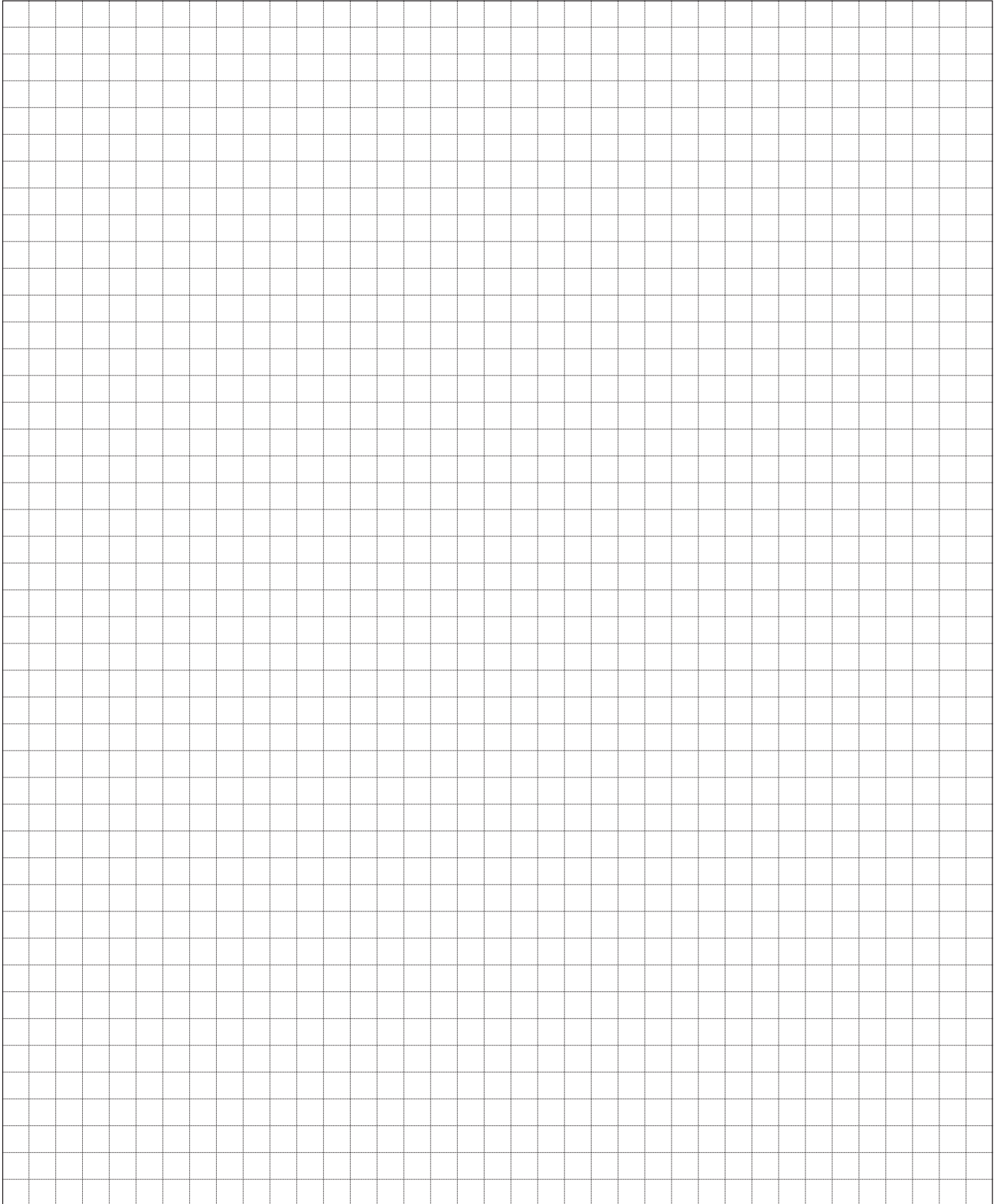


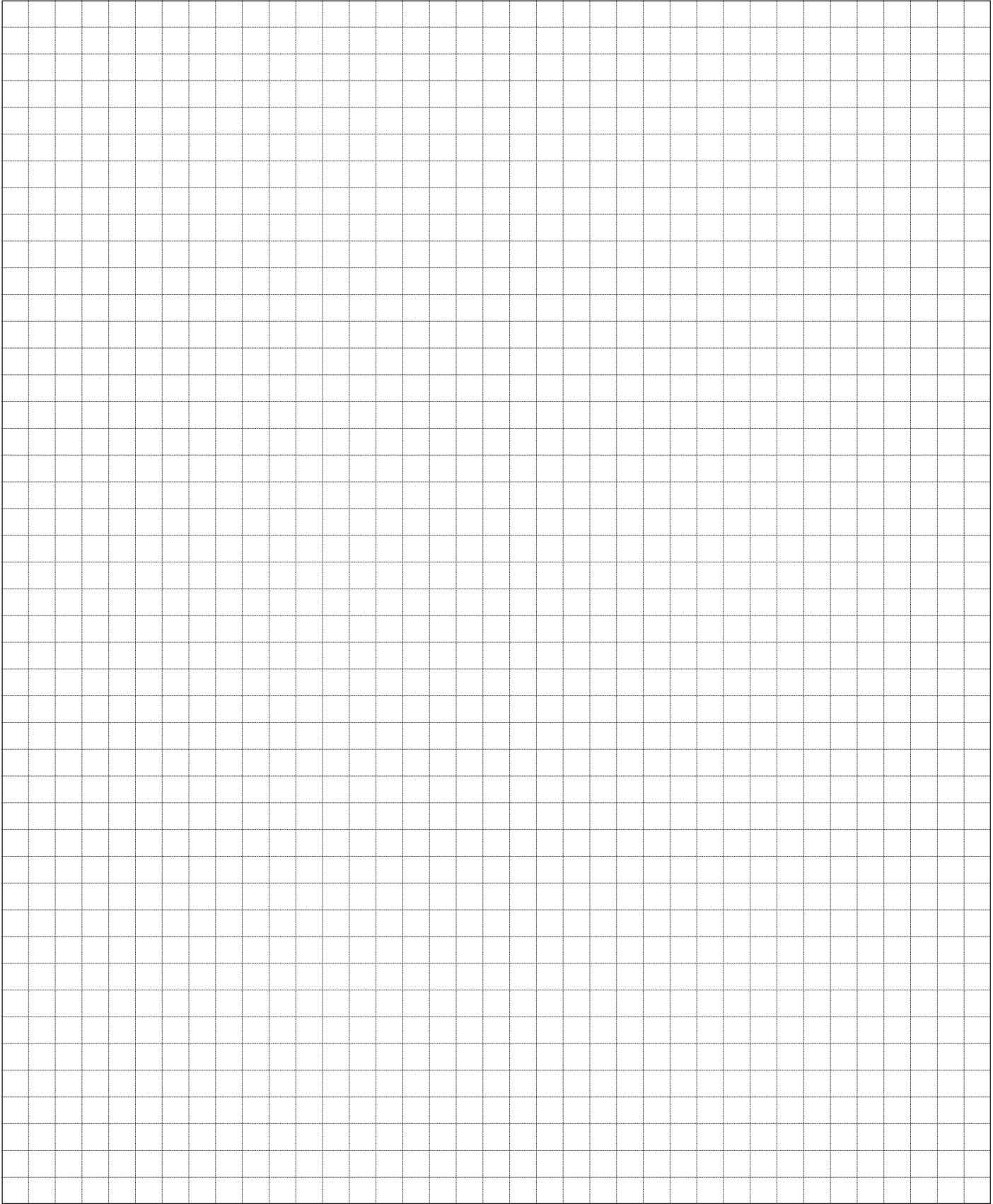
Order key	purch. code	direct. of rot.	displacement [cm ³ /1]	nom. press. [bar]	speed MIN. [min ⁻¹]	speed MAX. [min ⁻¹]	dimension					
							A [mm]	B [mm]	C [mm]	D [mm]	E [mm]	F [mm]
T3T-27R-S02D04-SG04G03-N		R	27	160	500	1 900	63.7	128.4	160.3	G 3/4	16	39
T3T-27L-S02D04-SG04G03-N		L										
T3T-24R-S02D04-SG04G03-N		R	24	200	500	2 000	61.3	123.6	155.5	G 3/4	16	39
T3T-24L-S02D04-SG04G03-N		L										
T3T-21R-S02D04-SG04G03-N		R	21	220	500	2 200	59.0	119.0	150.9	G 3/4	16	39
T3T-21L-S02D04-SG04G03-N		L										
T3T-18R-S02D04-SG04G03-N		R	18	240	500	2 800	56.7	114.3	146.2	G 3/4	16	39
T3T-18L-S02D04-SG04G03-N		L										
T3T-16R-S02D04-SG04G03-N		R	16	240	500	3 200	55.1	111.2	143.1	G 3/4	16	39
T3T-16L-S02D04-SG04G03-N		L										
T3T-15R-S02D04-SG04G03-N		R	15	240	500	3 200	54.3	109.6	141.5	G 3/4	16	39
T3T-15L-S02D04-SG04G03-N		L										
T3T-12R-S02D04-SG04G03-N		R	12	240	500	3 200	51.9	104.9	136.8	G 3/4	16	39
T3T-12L-S02D04-SG04G03-N		L										
T3T-9R-S02D04-SG03G03-N		R	9	240	500	2 800	49.6	100.1	132.0	G 1/2	14	33
T3T-9L-S02D04-SG03G03-N		L										



Other combinations are available after consultation.

Order key	purch. code	direct. of rot.	displacement [cm ³ /1]	nom. press. [bar]	speed MIN. [min ⁻¹]	speed MAX. [min ⁻¹]	dimension			
							A1 [mm]	A2 [mm]	B [mm]	C [mm]
T3T-21/12R-S02D06-SH06H05/H06H05-N		R	21/12	220/240	500	2 200	59.0	137.6	190.5	222.4
T3T-21/12L-S02D06-SH06H05/H06H05-N		L								
T3T-16/12R-S02D06-SH06H05/H06H05-N		R	16/12	240/240	500	3 200	55.1	129.8	182.7	214.6
T3T-16/12L-S02D06-SH06H05/H06H05-N		L								
T3T-12/9R-S02D06-SH06H05/H06H05-N		R	12/9	240/240	500	2 800	51.9	121.1	171.7	203.6
T3T-12/9L-S02D06-SH06H05/H06H05-N		L								
T3T-9/9R-S02D06-SH06H05/H06H05-N		R	9/9	240/240	500	2 800	49.6	116.4	167.0	198.9
T3T-9/9L-S02D06-SH06H05/H06H05-N		L								







jihostroj
AERO TECHNOLOGY & HYDRAULICS

JIHOSTROJ a.s.
Budějovická 148
CZ 382 32 Velešín
Czech Republic
tel.: +420 380 340 511
fax: +420 380 340 612
e-mail: mailbox@jihostroj.cz
http: //www.jihostroj.com

GPS 48°49'51.748" N 14°27'40.770" E

